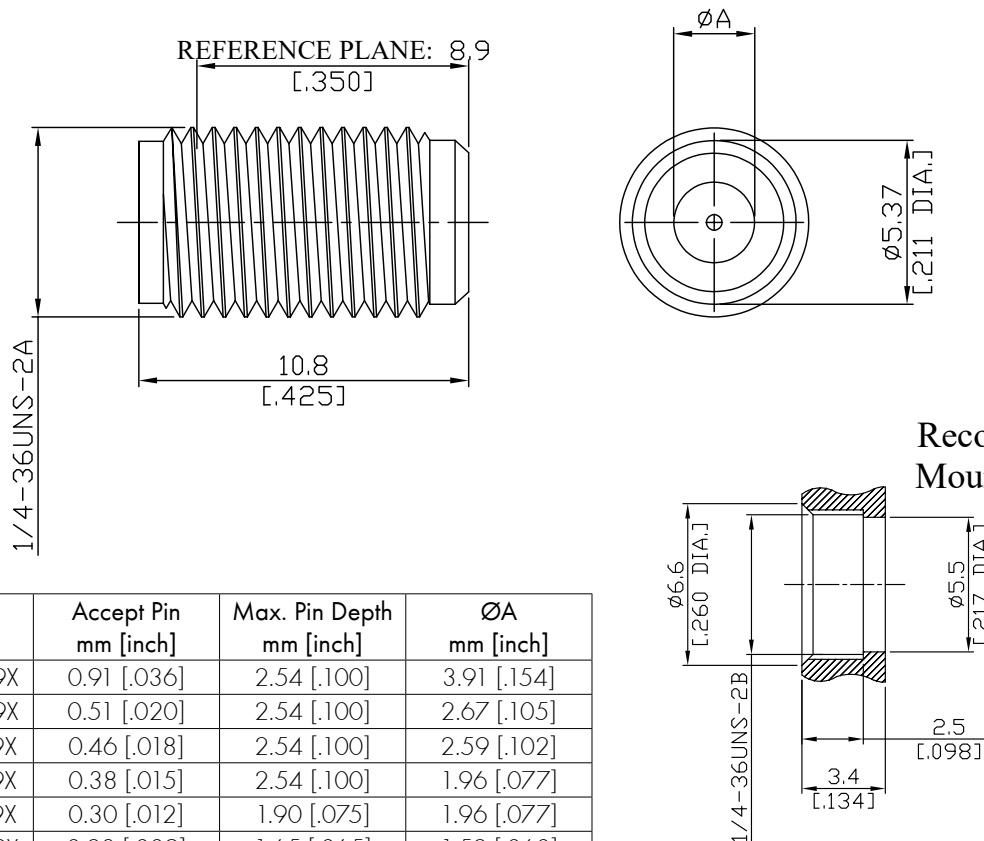


SMA Panel Feedthrough  
Receptacle Jack (Female)

SMA2BA50-0020A/9X



P/N	Accept Pin mm [inch]	Max. Pin Depth mm [inch]	ØA mm [inch]
SMA2BA50-0036A/9X	0.91 [.036]	2.54 [.100]	3.91 [.154]
SMA2BA50-0020A/9X	0.51 [.020]	2.54 [.100]	2.67 [.105]
SMA2BA50-0018A/9X	0.46 [.018]	2.54 [.100]	2.59 [.102]
SMA2BA50-0015A/9X	0.38 [.015]	2.54 [.100]	1.96 [.077]
SMA2BA50-0012A/9X	0.30 [.012]	1.90 [.075]	1.96 [.077]
SMA2BA50-0009A/9X	0.23 [.009]	1.65 [.065]	1.52 [.060]

All dimensions are in mm [inch]

Tolerances according to DIN ISO 2768-mH

**Interface**

According to IEC 60169-15; MIL-C-39012; MIL-STD-348A/310

**Electrical Data**

Impedance 50 Ω  
Frequency DC to 18 GHz  
VSWR  $\leq 1.06 + 0.01f(\text{GHz})$   
Insertion loss  $\leq 0.04 \times \sqrt{f}(\text{GHz})$  dB

**Mechanical Data**

Coupling mechanisms Screw-lock  
Weight N/A

**Environmental Data**

Temperature range -65°C to +165°C  
RoHS compliant

**Material And Plating**

Piece Parts	Material	Plating
Centre contact	Beryllium Copper	Gold plating(Nickel underplated)
Body	Stainless Steel	Passivated
Insulator	PTFE	

**Packing**

Single or 100